

SOUTH-EAST LONDON INTEGRATED CARE SYSTEM (ICS)- Voluntary sector opportunities & next steps

Tal Rosenzweig

Director of Voluntary Sector Collaboration & Partnerships

ICS- Background & context

- Learnings from Covid- collaboration across sectors and with communities is key for supporting people and communities to stay healthy & well.
- July 2022- Integrated Care Systems came into force (Health & Care Act 2022)
- South-East London Integrated Care System is partnership working between NHS, Local Authority and other relevant partners (mainly voluntary and community sector)

VCSE director role was created following consultation with sector leaders across South-East London early 2022 (3 years funding)



VCSE director role

- independent representation of VCSEs within ICS
- Enhance the profile of the sector within the ICS
- Enable connections and meaningful collaboration between VCSEs and health & care partners
- Generate opportunities (particularly from health) and enhance sector's sustainability
- link between the sector and other system partners (easy 'way-in')

Overall aim- Sector being an equitable partner within the ICS

ICS's strategic priorities



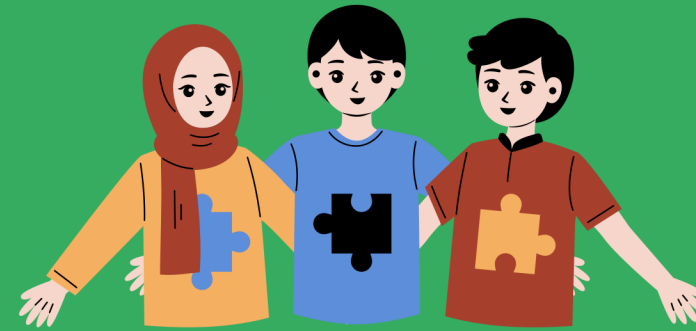
Prevention and wellbeing

Improving prevention of ill health & helping people in SE London stay healthy & well



Early years

Children get a good start in life & effective support for mothers, babies & families before birth and early in life



Children & YP mental health

Improving CYP's mental health, ensuring quick access to effective support for common MH challenges



Adult's mental health

Ensuring adults have quick access to early support to prevent MH challenges from worsening



Primary care & long term conditions

Ensuring people have convenient access to high quality primary care & improving support & care for people with long term conditions

- **Overall vision is for the people of south east London to live the happiest & healthiest lives.**
- **This can only be achieved through true collaboration with the voluntary & community sector and the varied communities of SEL**
- **Voluntary & community sector to play a key role in shaping and leading SE London ICS's vision, approach and provision.**



So far.....

- **Created the SEL VCSE strategic Alliance**
- **developing structures for consistent VCSE representation across the system**
- **ICS Strategy implementation-VCSE steer**
- **Enhancing capacity and resources for the sector**
- **Enhancing cross-borough links**



**WHAT'S
NEXT**

What's next

- **Development- what does collaboration between VCSs & health & care partners look like (including development of MOU between sector & ICB)**
- **Implementation of SEL ICS strategy- VCSs representation & steer**
- **ensuring equity in opportunities across the sector**
(structures to enable smaller/grassroot orgs to play an ongoing part)
- **Transforming access to resources and decision making powers**
(Alternative structures to competitive commissioning)
- **South-London Community Assets mapping & gapping exercise**




Opportunities

- **Influence & provide steer for strategy implementation**
- **Influence and be part of how& where resources are being focus towards** (either via direct engagement or via your CVS/Alliance rep)
- **Future collaboration opportunities** (cross-sectors & cross-boroughs)
- **Amplify the voices of communities/ groups you work alongside with / part of**

Your thoughts...

In two small groups:

1. Where/how can Bromley's VCSs have the most impact within ICB's vision & plans?
2. What will meaningful collaboration between CVSs & ICB look like to you?



**Still a long way to go
but many opportunities
ahead.....**

Tal Rosenzweig

TalR@communitylinksbromley.org.uk